



- New technology, new efficiencies
- Our electric journey
- Helping to build schools and hospitals
- Overcoming planning challenges

- Maximising public benefit
- Beyond Kent

Celebrating 2024

New technology, new efficiencies

The development of a digital recording system using touchscreen technology this year has already led to increased efficiency and reduced costs for clients.

We've opted to invest in a bespoke solution, allowing CAT staff to have a direct input into the development process. This ensures potential benefits are maximised without loss of quality. Indeed, integration with GPS surveying and photogrammetry has already allowed us to explore new ways of enhancing our site recording.

The ability of staff to make targeted fieldwork decisions based on academic and professional expertise has always been one of CAT's strengths and the role-out of new technology and software will help ensure that this approach continues well into the future.



Our electric journey

The UK's transition to a net zero economy presents a host of challenges but CAT remains determined to play its part in helping to achieve our nation's ambitious targets.

In addition to the steady replacement of CAT's existing diesel and petrol vehicles with electric alternatives, this year has seen a number of initiatives introduced as part of our Carbon Reduction Plan. Policies to encourage local recruitment and the use of local suppliers are now in place, while clients are offered greener alternatives to traditional site solutions, such as solar instead of diesel-powered welfare cabins.

We are also working with sub-contractors, such as plant hire companies to explore ways of working together to reduce their CO2 contributions. We hope to introduce further measure over the coming year, including additions to our electric fleet, so keep an eye out for our distinctive new vans.



Overcoming planning challenges

Fast paced and complex developments often pose significant challenges for clients, but CAT has a range of expertise and knowledge that can help to overcome any potential barrier.

We have worked closely with Dover District Council on their prestigious Bench Street development, which is a project that required careful risk management.

Of primary concern were the potential for ground-water changes that could negatively impact the remains of an internationally important Bronze Age boat that lies close to the development area, and complex urban sequences of Roman, Anglo-Saxon and medieval archaeology.

CAT consulted with specialist hydrologists and geoarchaeologists and delivered an informed and targeted evaluation within exposed cellars.



Maximising public benefit

Maximising public benefit from archaeological projects is central to CAT's operational ethos and we are always on hand to help our clients and partner organisations deliver this.

Following a review of the outreach work we have previously undertaken, this year we have worked to widen participation by including groups and individuals that we may not have engaged with previously.

Archaeology is greatly beneficial to people's health and wellbeing, and this is something that is becoming more apparent to the various organisations we work with.

One of many highlights this year has included the delivery of one-on-one and group-based sessions aimed at helping those living with dementia or caring for someone who does.

Helping to build schools and hospitals

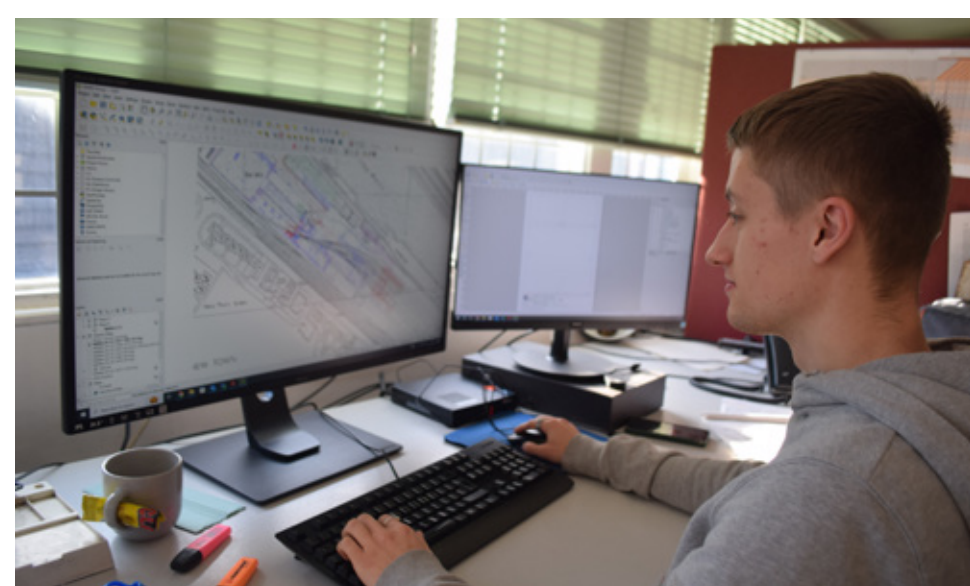
More development schemes than ever before have benefited from early-stage specialist support from CAT due to an increase in work for our consultancy team.

Our clients have been provided with increased confidence and certainty when setting out on their pre-planning journeys thanks to Desk-Based Assessments that have been written for projects ranging from large mixed use developments to schools, hospitals and private dwellings.

Further down the line, numerous Impact Assessments, Heritage Appraisals and Building Surveys have been produced to help the planning consultants and architects we work with move their schemes through the planning process.

This increase has enabled us to build our desk-based team further with the addition of a new member of staff.

Thanks to external and bespoke in-house training, Tom has already become a valued addition to CAT's consultancy team.



The work facilitated a rapid discharge of planning conditions and progression to the excavation phase of the project.

The project was successfully delivered by Senior Consultant and Project Manager, James Holman, who led the client through the various desk-based, evaluation and excavation phases, helping the Principal Contractor deal with a variety of Conditions while at the same time satisfying the requirements of Kent County Council's regional archaeological officer.

Construction at the site is now well advanced, the potential risks to the project have been managed and possible delays have been successfully mitigated.



Working with experts at the Royal Chelsea Hospital, staff have received specialist training to deliver workshops that focus on the power of artefacts to trigger memory and engage the senses.

CAT's Outreach team will continue to explore ways of engaging with new, younger, and harder to reach groups, while maintaining our traditional links working with schools and community-based organisations.

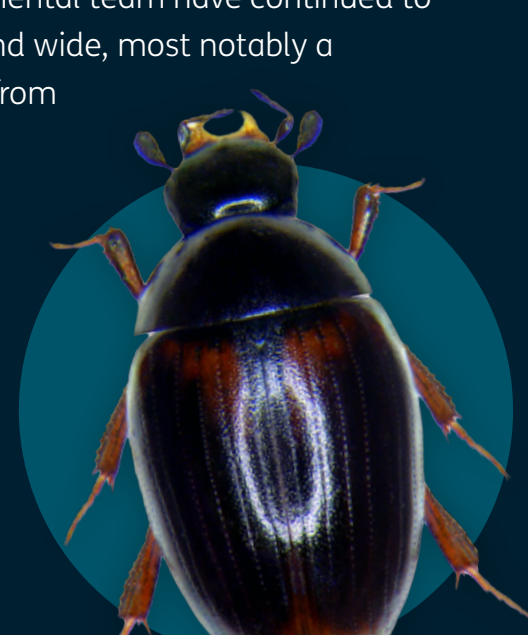
Beyond Kent

This year has seen a steady increase in the number and variety of projects undertaken by CAT outside Kent.

The success of work in Sussex, Surrey, London, Essex and elsewhere has been based on well-established relationships with numerous LPAs and the County Archaeologists that advise them.

Work has included desk-based studies and site visits near Great Dunmow, Croydon and Alcester, trenched evaluations in the Ashdown Forest, the Sussex Weald, Edgeware and Norwich, participation in a major excavation near Eastbourne and fieldwork at St Albans Cathedral.

Our specialist finds and environmental team have continued to draw in work from projects far and wide, most notably a study of ancient insect remains from Trondheim by Enid Allison, CAT's Environmental Manager, that provided fascinating evidence of post- Iron Age human activity and living conditions, animal stabling and waste disposal.



Remember to follow us on social media for all our latest messages, campaigns, on-site and in-office news.

